



MAP2K1 gene

mitogen-activated protein kinase kinase 1

Normal Function

The *MAP2K1* gene provides instructions for making a protein known as MEK1 protein kinase. This protein is part of a signaling pathway called the RAS/MAPK pathway, which transmits chemical signals from outside the cell to the cell's nucleus. RAS/MAPK signaling helps control the growth and division (proliferation) of cells, the process by which cells mature to carry out specific functions (differentiation), cell movement (migration), and the self-destruction of cells (apoptosis). MEK1 protein kinase appears to be essential for normal development before birth and for survival after birth.

Health Conditions Related to Genetic Changes

Cardiofaciocutaneous syndrome

At least 13 mutations in the *MAP2K1* gene have been identified in people with cardiofaciocutaneous syndrome. This condition affects many parts of the body, particularly the heart (cardio-), facial features (facio-), and the skin and hair (-cutaneous).

The *MAP2K1* gene mutations that cause cardiofaciocutaneous syndrome are germline mutations, which means that they are present in cells throughout the body. Each mutation changes a single protein building block (amino acid) in MEK1 protein kinase. The genetic changes abnormally activate the protein, which disrupts the tightly regulated RAS/MAPK signaling pathway in many types of cells. The altered signaling interferes with the normal development of many organs and tissues, resulting in the characteristic features of cardiofaciocutaneous syndrome.

Melorheostosis

At least three mutations in the *MAP2K1* gene have been identified in people with melorheostosis. This rare disease causes the abnormal growth of new bone tissue on the surface of existing bones. The new bone has a characteristic "dripping candle wax" or flowing appearance on x-rays.

The mutations associated with melorheostosis are described as somatic. Somatic mutations occur during a person's lifetime and are present only in certain cells, in this case, bone cells in a particular area of the body. The known mutations change single amino acids in MEK1 protein kinase. The mutations lead to the production of a version of the protein that is overactive, which increases RAS/MAPK signaling in bone tissue. The increased signaling disrupts the regulation of bone cell proliferation and allows new bone to grow abnormally. Studies suggest that increased RAS/MAPK

signaling also stimulates excess bone remodeling, a normal process in which old bone is broken down and new bone is created to replace it. These changes in bone growth and turnover underlie the bone abnormalities characteristic of melorheostosis.

Noonan syndrome with multiple lentigines

At least one mutation in the *MAP2K1* gene has been found to cause Noonan syndrome with multiple lentigines (formerly called LEOPARD syndrome). This condition is characterized by multiple brown skin spots (lentigines), heart defects, short stature, a sunken or protruding chest, and distinctive facial features.

The identified *MAP2K1* gene mutation is a germline mutation that replaces the amino acid glutamic acid with the amino acid glycine at position 102 (written as Glu102Gly or E102G) in MEK1 protein kinase. This change likely results in increased activation of the RAS/MAPK signaling pathway in cells throughout the body. The increased signaling interferes with the normal development of many organs and tissues, resulting in the characteristic features of Noonan syndrome with multiple lentigines.

It is unclear why the E102G mutation causes Noonan syndrome with multiple lentigines and other germline mutations in the *MAP2K1* gene cause different disorders, such as cardiofaciocutaneous syndrome (described above).

Langerhans cell histiocytosis

Lung cancer

Noonan syndrome

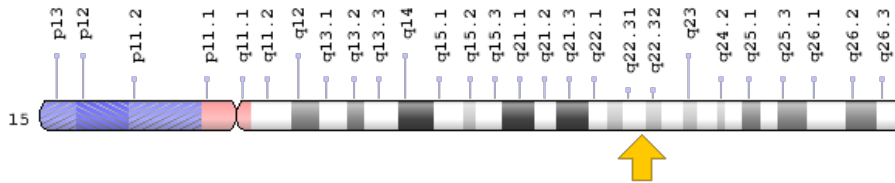
Other cancers

Mutations in the *MAP2K1* gene have also been found in several forms of cancer. Like the mutations that cause melorheostosis (described above), cancer-associated mutations in this gene are somatic. They occur only in the cells that ultimately give rise to cancer. Somatic mutations in the *MAP2K1* gene have been reported in several forms of blood cell cancer (leukemia and lymphoma), lung cancer, and a form of skin cancer called melanoma. The genetic changes lead to an overactive MEK1 protein kinase, which increases activation of the RAS/MAPK signaling pathway in particular tissues. The increased signaling allows cells to grow and divide too quickly, leading to cancer.

Chromosomal Location

Cytogenetic Location: 15q22.31, which is the long (q) arm of chromosome 15 at position 22.31

Molecular Location: base pairs 66,386,873 to 66,491,544 on chromosome 15 (Homo sapiens Annotation Release 109, GRCh38.p12) (NCBI)



Credit: Genome Decoration Page/NCBI

Other Names for This Gene

- Dual Specificity Mitogen-Activated Protein Kinase Kinase 1
- ERK Activator Kinase 1
- MAP Kinase Kinase 1
- MAPK/ERK kinase 1
- MAPKK1
- MEK-1
- MEK-1 Protein Kinase
- MEK1
- MKK-1 Protein Kinase
- MKK1
- MKK1 Protein Kinase
- MP2K1_HUMAN
- PRKMK1
- protein kinase, mitogen-activated, kinase 1 (MAP kinase kinase 1)

Additional Information & Resources

Educational Resources

- The Cell: A Molecular Approach (second edition, 2000): Ras, Raf, and the MAP Kinase Pathway
<https://www.ncbi.nlm.nih.gov/books/NBK9870/#A2252>

Clinical Information from GeneReviews

- Cardiofaciocutaneous Syndrome
<https://www.ncbi.nlm.nih.gov/books/NBK1186>
- Noonan Syndrome
<https://www.ncbi.nlm.nih.gov/books/NBK1124>
- Noonan Syndrome with Multiple Lentigines
<https://www.ncbi.nlm.nih.gov/books/NBK1383>

Scientific Articles on PubMed

- PubMed
<https://www.ncbi.nlm.nih.gov/pubmed?term=%28%28MAP2K1%5BTI%5D%29+OR+%28mitogen-activated+protein+kinase+kinase+1%5BTI%5D%29%29+OR+%28%28MAPKK1%5BTI%5D%29+OR+%28MEK-1%5BTI%5D%29+OR+%28MEK1%5BTI%5D%29+OR+%28MKK1%5BTI%5D%29%29+AND+english%5Bla%5D+AND+human%5Bmh%5D>

Catalog of Genes and Diseases from OMIM

- MITOGEN-ACTIVATED PROTEIN KINASE KINASE 1
<http://omim.org/entry/176872>

Research Resources

- Atlas of Genetics and Cytogenetics in Oncology and Haematology
http://atlasgeneticsoncology.org/Genes/GC_MAP2K1.html
- ClinVar
<https://www.ncbi.nlm.nih.gov/clinvar?term=MAP2K1%5Bgene%5D>
- HGNC Gene Symbol Report
https://www.genenames.org/data/gene-symbol-report/#!/hgnc_id/HGNC:6840
- Monarch Initiative
<https://monarchinitiative.org/gene/NCBIGene:5604>
- NCBI Gene
<https://www.ncbi.nlm.nih.gov/gene/5604>
- UniProt
<https://www.uniprot.org/uniprot/Q02750>

Sources for This Summary

- Brown NA, Furtado LV, Betz BL, Kiel MJ, Weigelin HC, Lim MS, Elenitoba-Johnson KS. High prevalence of somatic MAP2K1 mutations in BRAF V600E-negative Langerhans cell histiocytosis. *Blood*. 2014 Sep 4;124(10):1655-8. doi: 10.1182/blood-2014-05-577361. Epub 2014 Jun 30. *Citation on PubMed:* <https://www.ncbi.nlm.nih.gov/pubmed/24982505>
- Chakraborty R, Hampton OA, Shen X, Simko SJ, Shih A, Abhyankar H, Lim KP, Covington KR, Trevino L, Dewal N, Muzny DM, Doddapaneni H, Hu J, Wang L, Lupo PJ, Hicks MJ, Bonilla DL, Dwyer KC, Berres ML, Poulidakos PI, Merad M, McClain KL, Wheeler DA, Allen CE, Parsons DW. Mutually exclusive recurrent somatic mutations in MAP2K1 and BRAF support a central role for ERK activation in LCH pathogenesis. *Blood*. 2014 Nov 6;124(19):3007-15. doi: 10.1182/blood-2014-05-577825. Epub 2014 Sep 8. *Citation on PubMed:* <https://www.ncbi.nlm.nih.gov/pubmed/25202140>
Free article on PubMed Central: <https://www.ncbi.nlm.nih.gov/pmc/articles/PMC4224195/>
- Kang H, Jha S, Deng Z, Fratzi-Zelman N, Cabral WA, Iovic A, Meylan F, Hanson EP, Lange E, Katz J, Roschger P, Klaushofer K, Cowen EW, Siegel RM, Marini JC, Bhattacharyya T. Somatic activating mutations in MAP2K1 cause melorheostosis. *Nat Commun*. 2018 Apr 11;9(1):1390. doi: 10.1038/s41467-018-03720-z. *Citation on PubMed:* <https://www.ncbi.nlm.nih.gov/pubmed/29643386>
- Nava C, Hanna N, Michot C, Pereira S, Pouvreau N, Niihori T, Aoki Y, Matsubara Y, Arveiler B, Lacombe D, Pasmant E, Parfait B, Baumann C, Héron D, Sigaudy S, Toutain A, Rio M, Goldenberg A, Leheup B, Verloes A, Cavé H. Cardio-facio-cutaneous and Noonan syndromes due to mutations in the RAS/MAPK signalling pathway: genotype-phenotype relationships and overlap with Costello syndrome. *J Med Genet*. 2007 Dec;44(12):763-71. Epub 2007 Aug 17. *Citation on PubMed:* <https://www.ncbi.nlm.nih.gov/pubmed/17704260>
Free article on PubMed Central: <https://www.ncbi.nlm.nih.gov/pmc/articles/PMC2652823/>
- Nelson DS, van Halteren A, Quispel WT, van den Bos C, Bovée JV, Patel B, Badalian-Very G, van Hummelen P, Ducar M, Lin L, MacConaill LE, Egeler RM, Rollins BJ. MAP2K1 and MAP3K1 mutations in Langerhans cell histiocytosis. *Genes Chromosomes Cancer*. 2015 Jun;54(6):361-8. doi: 10.1002/gcc.22247. Epub 2015 Mar 31. *Citation on PubMed:* <https://www.ncbi.nlm.nih.gov/pubmed/25899310>
- Nishi E, Mizuno S, Nanjo Y, Niihori T, Fukushima Y, Matsubara Y, Aoki Y, Kosho T. A novel heterozygous MAP2K1 mutation in a patient with Noonan syndrome with multiple lentigines. *Am J Med Genet A*. 2015 Feb;167A(2):407-11. doi: 10.1002/ajmg.a.36842. Epub 2014 Nov 25. *Citation on PubMed:* <https://www.ncbi.nlm.nih.gov/pubmed/25423878>
- Rodriguez-Viciano P, Tetsu O, Tidyman WE, Estep AL, Conger BA, Cruz MS, McCormick F, Rauen KA. Germline mutations in genes within the MAPK pathway cause cardio-facio-cutaneous syndrome. *Science*. 2006 Mar 3;311(5765):1287-90. Epub 2006 Jan 26. *Citation on PubMed:* <https://www.ncbi.nlm.nih.gov/pubmed/16439621>

Reprinted from Genetics Home Reference:
<https://ghr.nlm.nih.gov/gene/MAP2K1>

Reviewed: May 2018

Published: June 11, 2019

Lister Hill National Center for Biomedical Communications
U.S. National Library of Medicine
National Institutes of Health
Department of Health & Human Services