



HNF1A gene

HNF1 homeobox A

Normal Function

The *HNF1A* gene provides instructions for making a protein called hepatocyte nuclear factor-1 alpha (HNF-1 α). The HNF-1 α protein acts as a transcription factor, which means it attaches (binds) to specific regions of DNA and helps control the activity of certain genes. While this protein is found in several tissues and organs, it seems to be especially important in the pancreas and liver.

Regulation of gene activity by the HNF-1 α protein is critical for the growth and development of beta cells in the pancreas. Beta cells produce and release (secrete) the hormone insulin. Insulin helps regulate blood sugar levels by controlling how much sugar (in the form of glucose) is passed from the bloodstream into cells to be used as energy. The HNF-1 α protein also controls genes involved in liver development. By controlling genes that regulate cell growth and survival, the HNF-1 α protein is thought to act as a tumor suppressor, which means that it helps prevent cells from growing and dividing too rapidly or in an uncontrolled way.

The structure of HNF-1 α includes several important regions that help it carry out its functions. One of the regions, called the dimerization domain, is critical for protein interactions. This region allows HNF-1 α proteins to interact with each other or with other proteins that have a similar structure, creating a two-protein unit (dimer) that functions as a transcription factor. Another region, known as the DNA binding domain, binds to specific areas of DNA, allowing the dimer to control gene activity.

Health Conditions Related to Genetic Changes

Maturity-onset diabetes of the young

Mutations in the *HNF1A* gene cause maturity-onset diabetes of the young (MODY), which is a group of conditions characterized by abnormally high blood sugar levels. This form of diabetes usually begins before age 30. *HNF1A* gene mutations cause the most common type of MODY, called *HNF1A*-MODY (also known as MODY3). Early symptoms are caused by high blood sugar and include frequent urination (polyuria), excessive thirst (polydipsia), fatigue, blurred vision, weight loss, and recurrent skin infections. Over time, uncontrolled high blood sugar can lead to eye and kidney problems.

HNF1A gene mutations that cause *HNF1A*-MODY occur in one of the two copies of the gene in each cell. These mutations result in production of an altered HNF-1 α

protein that is unable to function normally. Some changes prevent the HNF-1 α protein from forming dimers; others prevent the protein from entering the nucleus where it interacts with DNA; still others prevent the transcription factor from attaching to DNA to control gene activity. These changes interrupt transcription, altering gene activity in cells. As a result, beta cell development and function are impaired. The cells are less able than normal to produce insulin in response to sugar in the blood, which means blood sugar cannot be controlled. Elevated blood sugar results in the signs and symptoms of MODY.

Rarely, individuals with *HNF1A*-MODY develop one or more noncancerous (benign) liver tumors called hepatocellular adenomas. In these individuals, a mutation occurs in the second copy of the *HNF1A* gene in liver cells. This second mutation, called a somatic mutation, is not inherited. It is unclear how the mutations cause liver cells to grow uncontrollably and form tumors.

Congenital hyperinsulinism

Type 1 diabetes

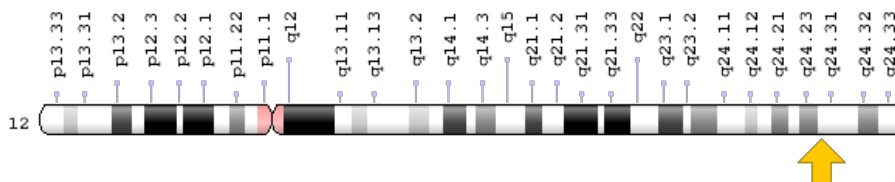
Other disorders

Hepatocellular adenomas also occur in people without *HNF1A*-MODY (described above). In these individuals, the tumors are associated with somatic mutations in both copies of the *HNF1A* gene. While rare, hepatocellular adenomas occur in women more frequently than in men, and most affected individuals develop a single tumor. *HNF1A*-mutated hepatocellular adenomas (also known as H-HCA) account for about 30 to 40 percent of this type of liver tumor. The *HNF1A* gene mutations that cause these tumors severely reduce or eliminate the function of the HNF-1 α protein in affected liver cells. It is unclear how loss of HNF-1 α function causes cells to grow uncontrollably and form tumors.

Chromosomal Location

Cytogenetic Location: 12q24.31, which is the long (q) arm of chromosome 12 at position 24.31

Molecular Location: base pairs 120,977,683 to 121,002,512 on chromosome 12 (Homo sapiens Updated Annotation Release 109.20200522, GRCh38.p13) (NCBI)



Credit: Genome Decoration Page/NCBI

Other Names for This Gene

- HNF1 Homeobox A Gene
- LFB1
- TCF1

Additional Information & Resources

Clinical Information from GeneReviews

- Maturity-Onset Diabetes of the Young Overview
<https://www.ncbi.nlm.nih.gov/books/NBK500456>

Scientific Articles on PubMed

- PubMed
<https://www.ncbi.nlm.nih.gov/pubmed?term=%28%28HNF1A%5BTIAB%5D%29+OR+%28HNF1+homeobox+A%5BTIAB%5D%29%29+AND+%28%28Genes%5BMH%5D%29+OR+%28Genetic+Phenomena%5BMH%5D%29%29+AND+english%5Bla%5D+AND+human%5Bmh%5D+AND+%22last+720+days%22%5Bdp%5D>

Catalog of Genes and Diseases from OMIM

- HNF1 HOMEBOX A
<http://omim.org/entry/142410>

Research Resources

- Atlas of Genetics and Cytogenetics in Oncology and Haematology
http://atlasgeneticsoncology.org/Genes/GC_HNF1A.html
- ClinVar
<https://www.ncbi.nlm.nih.gov/clinvar?term=HNF1A%5Bgene%5D>
- HGNC Gene Symbol Report
https://www.genenames.org/data/gene-symbol-report#!/hgnc_id/HGNC:11621
- Monarch Initiative
<https://monarchinitiative.org/gene/NCBIGene:6927>
- NCBI Gene
<https://www.ncbi.nlm.nih.gov/gene/6927>
- UniProt
<https://www.uniprot.org/uniprot/P20823>

Sources for This Summary

- Balamurugan K, Bjørkhaug L, Mahajan S, Kanthimathi S, Njølstad PR, Srinivasan N, Mohan V, Radha V. Structure-function studies of HNF1A (MODY3) gene mutations in South Indian patients with monogenic diabetes. *Clin Genet*. 2016 Dec;90(6):486-495. doi: 10.1111/cge.12757. Epub 2016 Mar 4.
Citation on PubMed: <https://www.ncbi.nlm.nih.gov/pubmed/26853433>
- Bluteau O, Jeannot E, Bioulac-Sage P, Marqués JM, Blanc JF, Bui H, Beaudoin JC, Franco D, Balabaud C, Laurent-Puig P, Zucman-Rossi J. Bi-allelic inactivation of TCF1 in hepatic adenomas. *Nat Genet*. 2002 Oct;32(2):312-5. Epub 2002 Sep 23.
Citation on PubMed: <https://www.ncbi.nlm.nih.gov/pubmed/12355088>
- Fu J, Wang T, Zhai X, Xiao X. Primary hepatocellular adenoma due to biallelic HNF1A mutations and its co-occurrence with MODY 3: case-report and review of the literature. *Endocrine*. 2020 Mar; 67(3):544-551. doi: 10.1007/s12020-019-02138-x. Epub 2019 Nov 21.
Citation on PubMed: <https://www.ncbi.nlm.nih.gov/pubmed/31754975>
Free article on PubMed Central: <https://www.ncbi.nlm.nih.gov/pmc/articles/PMC7054351/>
- OMIM: HNF1 HOMEODOMAIN A
<http://omim.org/entry/142410>
- Haliyur R, Tong X, Sanyoura M, Shrestha S, Lindner J, Saunders DC, Aramandla R, Poffenberger G, Redick SD, Bottino R, Prasad N, Levy SE, Blind RD, Harlan DM, Philipson LH, Stein RW, Brissova M, Powers AC. Human islets expressing HNF1A variant have defective β cell transcriptional regulatory networks. *J Clin Invest*. 2019 Jan 2;129(1):246-251. doi: 10.1172/JCI121994. Epub 2018 Dec 3.
Citation on PubMed: <https://www.ncbi.nlm.nih.gov/pubmed/30507613>
Free article on PubMed Central: <https://www.ncbi.nlm.nih.gov/pmc/articles/PMC6307934/>
- Malikova J, Kaci A, Dusatkova P, Aukrust I, Torsvik J, Vesela K, Kankova PD, Njølstad PR, Pruhova S, Bjørkhaug L. Functional Analyses of HNF1A-MODY Variants Refine the Interpretation of Identified Sequence Variants. *J Clin Endocrinol Metab*. 2020 Apr 1;105(4). pii: dgaa051. doi: 10.1210/clinem/dgaa051.
Citation on PubMed: <https://www.ncbi.nlm.nih.gov/pubmed/32017842>

- Najmi LA, Aukrust I, Flannick J, Molnes J, Burtt N, Molven A, Groop L, Altshuler D, Johansson S, Bjørkhaug L, Njølstad PR. Functional Investigations of HNF1A Identify Rare Variants as Risk Factors for Type 2 Diabetes in the General Population. *Diabetes*. 2017 Feb;66(2):335-346. doi: 10.2337/db16-0460. Epub 2016 Nov 29.
Citation on PubMed: <https://www.ncbi.nlm.nih.gov/pubmed/27899486>
Free article on PubMed Central: <https://www.ncbi.nlm.nih.gov/pmc/articles/PMC5860263/>
 - Yamagata K. Roles of HNF1 α and HNF4 α in pancreatic β -cells: lessons from a monogenic form of diabetes (MODY). *Vitam Horm*. 2014;95:407-23. doi: 10.1016/B978-0-12-800174-5.00016-8. Review.
Citation on PubMed: <https://www.ncbi.nlm.nih.gov/pubmed/24559927>
-

Reprinted from Genetics Home Reference:
<https://ghr.nlm.nih.gov/gene/HNF1A>

Reviewed: July 2020

Published: August 17, 2020

Lister Hill National Center for Biomedical Communications
U.S. National Library of Medicine
National Institutes of Health
Department of Health & Human Services