



DYNC1H1 gene

dynein cytoplasmic 1 heavy chain 1

Normal Function

The *DYNC1H1* gene provides instructions for making a protein that is part of a group (complex) of proteins called dynein. This complex is found in the fluid inside cells (cytoplasm). Dynein is turned on (activated) by attaching (binding) to another complex called dynactin. This dynein-dynactin complex binds to various materials within cells. Using energy provided by molecules called ATP, the dynein-dynactin complex moves material along a track-like system of small tubes called microtubules, similar to a conveyer belt. The dynein-dynactin complex is necessary for protein transport, positioning of cell compartments, movement of structures within the cell, and many other cell processes. Dynein helps neighboring nerve cells (neurons) communicate by transporting sac-like structures called synaptic vesicles that contain chemical messengers. When synaptic vesicles are passed from one neuron to another, the dynein-dynactin complex transports the vesicle from the edge of the cell to the nucleus, where the chemical message is received.

The parts (subunits) of a dynein complex are classified by weight as heavy, intermediate, light intermediate, or light chains. Two heavy chain proteins bind together to form the core of the dynein complex. Combinations of intermediate, light intermediate, and light chains make up the rest of the complex. The protein produced from the *DYNC1H1* gene is a heavy chain. Other subunits are produced from different genes.

Health Conditions Related to Genetic Changes

[Charcot-Marie-Tooth disease](#)

[Spinal muscular atrophy with lower extremity predominance](#)

At least eight mutations in the *DYNC1H1* gene have been found to cause a condition called spinal muscular atrophy with lower extremity predominance (SMA-LED). This condition is characterized by muscle weakness and wasting (atrophy) in the lower limbs that often begins in infancy or childhood. The *DYNC1H1* gene mutations that cause SMA-LED replace single protein building blocks (amino acids) in the heavy chain subunit of the dynein complex. These changes alter the core of the dynein complex and impair its function. As a result, the movement of proteins, synaptic vesicles, and other materials within cells is reduced. Decreased synaptic vesicle transport in neurons that control muscle movement (motor neurons), leading to impaired neuronal growth, is thought to contribute to the muscle weakness and

atrophy experienced by people with SMA-LED. It is unclear why this condition primarily affects the lower limbs.

Other disorders

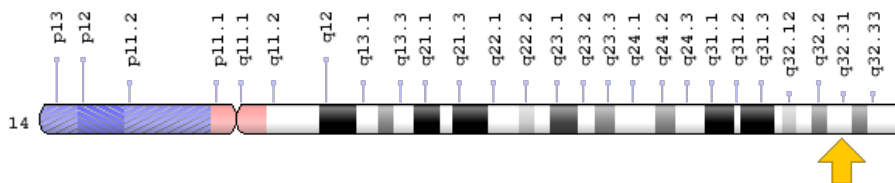
DYNC1H1 gene mutations have been identified in some people who have intellectual disability. These affected individuals often have a brain malformation called polymicrogyria. Normally, the surface of the brain has many ridges or folds, called gyri. In people with polymicrogyria, the brain develops too many folds, and the folds are unusually small. In addition to intellectual disability, some affected individuals develop seizures and movement problems.

The *DYNC1H1* gene mutations that cause intellectual disability are typically in a different region of the gene than those that cause SMA-LED (described above). It is unclear whether the site of the mutation is associated with the location in the body most affected by the disease, with SMA-LED-associated mutations primarily affecting motor neurons and intellectual disability-associated mutations primarily affecting neurons in the brain.

Chromosomal Location

Cytogenetic Location: 14q32.31, which is the long (q) arm of chromosome 14 at position 32.31

Molecular Location: base pairs 101,964,573 to 102,056,443 on chromosome 14 (Homo sapiens Updated Annotation Release 109.20190607, GRCh38.p13) (NCBI)



Credit: Genome Decoration Page/NCBI

Other Names for This Gene

- cytoplasmic dynein 1 heavy chain 1
- cytoplasmic dynein heavy chain 1
- DHC1
- DHC1a
- DNCH1
- Dnchc1

- DNCL
- DNECL
- DYHC
- DYHC1_HUMAN
- dynein heavy chain, cytosolic
- dynein, cytoplasmic 1, heavy chain 1
- dynein, cytoplasmic, heavy polypeptide 1
- HL-3
- p22

Additional Information & Resources

Educational Resources

- Basic Neurochemistry (sixth edition, 1999): Cytoplasmic Dyneins May Have Multiple Roles in the Neuron
<https://www.ncbi.nlm.nih.gov/books/NBK27955/#A1963>
- Molecular Cell Biology (fourth edition, 2002): A General Model for Kinesin- and Dynein-Mediated Transport in a Typical Cell (figure)
<https://www.ncbi.nlm.nih.gov/books/NBK21710/figure/A5469/?report=objectonly>
- The Cell: A Molecular Approach (second edition, 2000): Microtubule Motor Proteins (figure)
<https://www.ncbi.nlm.nih.gov/books/NBK9833/figure/A1835/>
- The Cell: A Molecular Approach (second edition, 2000): Organelle Transport and Intracellular Organization
<https://www.ncbi.nlm.nih.gov/books/NBK9833/#A1836>

Clinical Information from GeneReviews

- Charcot-Marie-Tooth Hereditary Neuropathy Overview
<https://www.ncbi.nlm.nih.gov/books/NBK1358>

Scientific Articles on PubMed

- PubMed
<https://www.ncbi.nlm.nih.gov/pubmed?term=%28DYNC1H1%5BTIAB%5D%29+OR+%28cytoplasmic+dynein+heavy+chain%5BTIAB%5D%29+AND+%28%28Genes%5BMH%5D%29+OR+%28Genetic+Phenomena%5BMH%5D%29%29+AND+english%5Bla%5D+AND+human%5Bmh%5D+AND+%22last+1800+days%22%5Bdp%5D>

Catalog of Genes and Diseases from OMIM

- DYNEIN, CYTOPLASMIC 1, HEAVY CHAIN 1
<http://omim.org/entry/600112>

Research Resources

- Atlas of Genetics and Cytogenetics in Oncology and Haematology
http://atlasgeneticsoncology.org/Genes/GC_DYNC1H1.html
- ClinVar
<https://www.ncbi.nlm.nih.gov/clinvar?term=DYNC1H1%5Bgene%5D>
- HGNC Gene Symbol Report
https://www.genenames.org/data/gene-symbol-report/#!/hgnc_id/HGNC:2961
- Monarch Initiative
<https://monarchinitiative.org/gene/NCBIGene:1778>
- NCBI Gene
<https://www.ncbi.nlm.nih.gov/gene/1778>
- UniProt
<https://www.uniprot.org/uniprot/Q14204>
- Washington University, St. Louis: Neuromuscular Disease Center
<https://neuromuscular.wustl.edu/synmot.html#smallld>

Sources for This Summary

- OMIM: DYNEIN, CYTOPLASMIC 1, HEAVY CHAIN 1
<http://omim.org/entry/600112>
- Eschbach J, Dupuis L. Cytoplasmic dynein in neurodegeneration. *Pharmacol Ther.* 2011 Jun; 130(3):348-63. doi: 10.1016/j.pharmthera.2011.03.004. Epub 2011 Mar 21. Review.
Citation on PubMed: <https://www.ncbi.nlm.nih.gov/pubmed/21420428>
- Harms MB, Ori-McKenney KM, Scoto M, Tuck EP, Bell S, Ma D, Masi S, Allred P, Al-Lozi M, Reilly MM, Miller LJ, Jani-Acsadi A, Pestronk A, Shy ME, Muntoni F, Vallee RB, Baloh RH. Mutations in the tail domain of DYNC1H1 cause dominant spinal muscular atrophy. *Neurology.* 2012 May 29; 78(22):1714-20. doi: 10.1212/WNL.0b013e3182556c05. Epub 2012 Mar 28.
Citation on PubMed: <https://www.ncbi.nlm.nih.gov/pubmed/22459677>
Free article on PubMed Central: <https://www.ncbi.nlm.nih.gov/pmc/articles/PMC3359582/>
- Levy JR, Holzbaur EL. Cytoplasmic dynein/dynactin function and dysfunction in motor neurons. *Int J Dev Neurosci.* 2006 Apr-May;24(2-3):103-11. Epub 2006 Jan 6. Review.
Citation on PubMed: <https://www.ncbi.nlm.nih.gov/pubmed/16406469>

- Scoto M, Rossor AM, Harms MB, Cirak S, Calissano M, Robb S, Manzur AY, Martínez Arroyo A, Rodriguez Sanz A, Mansour S, Fallon P, Hadjikoumi I, Klein A, Yang M, De Visser M, Overweg-Plandsoen WC, Baas F, Taylor JP, Benatar M, Connolly AM, Al-Lozi MT, Nixon J, de Goede CG, Foley AR, McWilliam C, Pitt M, Sewry C, Phadke R, Hafezparast M, Chong WK, Mercuri E, Baloh RH, Reilly MM, Muntoni F. Novel mutations expand the clinical spectrum of DYNC1H1-associated spinal muscular atrophy. *Neurology*. 2015 Feb 17;84(7):668-79. doi: 10.1212/WNL.0000000000001269. Epub 2015 Jan 21.
Citation on PubMed: <https://www.ncbi.nlm.nih.gov/pubmed/25609763>
Free article on PubMed Central: <https://www.ncbi.nlm.nih.gov/pmc/articles/PMC4336105/>
- Strickland AV, Schabhüttl M, Offenbacher H, Synofzik M, Hauser NS, Brunner-Krainz M, Gruber-Sedlmayr U, Moore SA, Windhager R, Bender B, Harms M, Klebe S, Young P, Kennerson M, Garcia AS, Gonzalez MA, Züchner S, Schule R, Shy ME, Auer-Grumbach M. Mutation screen reveals novel variants and expands the phenotypes associated with DYNC1H1. *J Neurol*. 2015 Sep; 262(9):2124-34. doi: 10.1007/s00415-015-7727-2. Epub 2015 Jun 24.
Citation on PubMed: <https://www.ncbi.nlm.nih.gov/pubmed/26100331>
Free article on PubMed Central: <https://www.ncbi.nlm.nih.gov/pmc/articles/PMC4573829/>
- Weedon MN, Hastings R, Caswell R, Xie W, Paszkiewicz K, Antoniadis T, Williams M, King C, Greenhalgh L, Newbury-Ecob R, Ellard S. Exome sequencing identifies a DYNC1H1 mutation in a large pedigree with dominant axonal Charcot-Marie-Tooth disease. *Am J Hum Genet*. 2011 Aug 12; 89(2):308-12. doi: 10.1016/j.ajhg.2011.07.002. Epub 2011 Aug 4.
Citation on PubMed: <https://www.ncbi.nlm.nih.gov/pubmed/21820100>
Free article on PubMed Central: <https://www.ncbi.nlm.nih.gov/pmc/articles/PMC3155164/>

Reprinted from Genetics Home Reference:
<https://ghr.nlm.nih.gov/gene/DYNC1H1>

Reviewed: May 2018
Published: September 10, 2019

Lister Hill National Center for Biomedical Communications
U.S. National Library of Medicine
National Institutes of Health
Department of Health & Human Services