



CYP1B1 gene

cytochrome P450 family 1 subfamily B member 1

Normal Function

The *CYP1B1* gene provides instructions for producing an enzyme that is a member of the cytochrome P450 family of enzymes. These enzymes are involved in many processes in the body, such as assisting with reactions that break down drugs and produce certain fats (lipids). The CYP1B1 enzyme participates in biochemical reactions in which an oxygen atom is added to other molecules.

The CYP1B1 enzyme is active in many tissues, including structures of the eye. The function of the CYP1B1 enzyme in the development of the eye is unclear, but it may play a role in forming structures at the front of the eye and may also be involved in a process that regulates the secretion of fluid inside the eye.

Health Conditions Related to Genetic Changes

Early-onset glaucoma

More than 140 *CYP1B1* gene mutations have been identified to cause early-onset glaucoma. People with this condition experience increased pressure within the eye before the age of 40. This pressure causes damage to the optic nerves connecting the eyes and the brain. Between 20 percent and 40 percent of people with glaucoma before the age of 5 (primary congenital glaucoma) have mutations in the *CYP1B1* gene. The mutations that cause early-onset glaucoma may result in an enzyme that is unstable or the wrong shape.

It is not well understood how defects in the CYP1B1 enzyme cause signs and symptoms of glaucoma. Recent studies suggest that the defects may interfere with the early development of the trabecular meshwork, which is a network of mesh-like canals that helps drain excess fluid from the eye. If fluid cannot be drained, pressure inside the eye may increase, which is characteristic of glaucoma.

The CYP1B1 enzyme may interact with another protein called myocilin, which is produced from the *MYOC* gene. Individuals with mutations in both the *MYOC* and *CYP1B1* genes may develop glaucoma at an earlier age and have more severe symptoms than do those with mutations in only one of the genes.

Peters anomaly

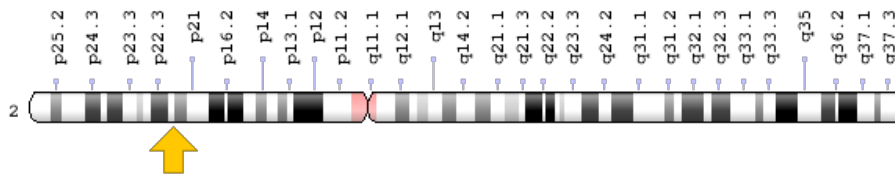
A few mutations in the *CYP1B1* gene have been found to cause Peters anomaly. This condition is characterized by abnormal development of certain structures at the front of the eye and clouding of the clear front surface of the eye (cornea). The mutations that cause Peters anomaly likely impair the normal function of the CYP1B1

enzyme or disrupt enzyme production. As a result, there is a shortage (deficiency) of normal enzyme. A lack of the CYP1B1 enzyme likely disrupts normal development of the eye, although it is unclear exactly how this deficiency leads to the features of Peters anomaly.

Chromosomal Location

Cytogenetic Location: 2p22.2, which is the short (p) arm of chromosome 2 at position 22.2

Molecular Location: base pairs 38,067,603 to 38,076,181 on chromosome 2 (Homo sapiens Updated Annotation Release 109.20190607, GRCh38.p13) (NCBI)



Credit: Genome Decoration Page/NCBI

Other Names for This Gene

- aryl hydrocarbon hydroxylase
- CP1B
- CP1B1_HUMAN
- cytochrome P450, family 1, subfamily B, polypeptide 1
- cytochrome P450, subfamily I (dioxin-inducible), polypeptide 1 (glaucoma 3, primary infantile)
- flavoprotein-linked monooxygenase
- GLC3A
- microsomal monooxygenase
- xenobiotic monooxygenase

Additional Information & Resources

Clinical Information from GeneReviews

- Primary Congenital Glaucoma
<https://www.ncbi.nlm.nih.gov/books/NBK1135>

Scientific Articles on PubMed

- PubMed
<https://www.ncbi.nlm.nih.gov/pubmed?term=%28CYP1B1%5BTIAB%5D%29+AND+%28%28cytochrome+p-450+cyp1b1%5BNM%5D%29+OR+%28cyp1b1%5BNM%5D%29+OR+%28cytochrome+p450+cyp1b1%5BNM%5D%29+OR+%28estrogen+4-hydroxylase%5BNM%5D%29+OR+%28eds-4-hydroxylase%5BNM%5D%29+OR+%28cytochrome+p4501b1%5BNM%5D%29+OR+%28estradiol+17-sulfate+4-hydroxylase%5BNM%5D%29+OR+%28estradiol-4-hydroxylase%5BNM%5D%29%29+AND+%28%28Genes%5BMH%5D%29+OR+%28Genetic+Phenomena%5BMH%5D%29%29+AND+english%5BIa%5D+AND+human%5Bmh%5D+AND+%22last+720+days%22%5Bdp%5D>

Catalog of Genes and Diseases from OMIM

- CYTOCHROME P450, SUBFAMILY I, POLYPEPTIDE 1
<http://omim.org/entry/601771>

Research Resources

- Atlas of Genetics and Cytogenetics in Oncology and Haematology
http://atlasgeneticsoncology.org/Genes/GC_CYP1B1.html
- ClinVar
<https://www.ncbi.nlm.nih.gov/clinvar?term=CYP1B1%5Bgene%5D>
- HGNC Gene Symbol Report
https://www.genenames.org/data/gene-symbol-report#!/hgnc_id/HGNC:2597
- Monarch Initiative
<https://monarchinitiative.org/gene/NCBIGene:1545>
- NCBI Gene
<https://www.ncbi.nlm.nih.gov/gene/1545>
- UniProt
<https://www.uniprot.org/uniprot/Q16678>

Sources for This Summary

- Achary MS, Reddy AB, Chakrabarti S, Panicker SG, Mandal AK, Ahmed N, Balasubramanian D, Hasnain SE, Nagarajaram HA. Disease-causing mutations in proteins: structural analysis of the CYP1B1 mutations causing primary congenital glaucoma in humans. *Biophys J*. 2006 Dec 15; 91(12):4329-39. Epub 2006 Sep 8.
Citation on PubMed: <https://www.ncbi.nlm.nih.gov/pubmed/16963504>
Free article on PubMed Central: <https://www.ncbi.nlm.nih.gov/pmc/articles/PMC1779944/>
- Bayat B, Yazdani S, Alavi A, Chiani M, Chitsazian F, Tusi BK, Suri F, Narooie-Nejhad M, Sanati MH, Elahi E. Contributions of MYOC and CYP1B1 mutations to JOAG. *Mol Vis*. 2008 Mar 13;14: 508-17.
Citation on PubMed: <https://www.ncbi.nlm.nih.gov/pubmed/18385784>
Free article on PubMed Central: <https://www.ncbi.nlm.nih.gov/pmc/articles/PMC2268862/>

- OMIM: CYTOCHROME P450, SUBFAMILY I, POLYPEPTIDE 1
<http://omim.org/entry/601771>
- Chavarria-Soley G, Sticht H, Aklillu E, Ingelman-Sundberg M, Pasutto F, Reis A, Rautenstrauss B. Mutations in CYP1B1 cause primary congenital glaucoma by reduction of either activity or abundance of the enzyme. *Hum Mutat.* 2008 Sep;29(9):1147-53. doi: 10.1002/humu.20786.
Citation on PubMed: <https://www.ncbi.nlm.nih.gov/pubmed/18470941>
- Chen Y, Jiang D, Yu L, Katz B, Zhang K, Wan B, Sun X. CYP1B1 and MYOC mutations in 116 Chinese patients with primary congenital glaucoma. *Arch Ophthalmol.* 2008 Oct;126(10):1443-7. doi: 10.1001/archoph.126.10.1443.
Citation on PubMed: <https://www.ncbi.nlm.nih.gov/pubmed/18852424>
- Edward D, Al Rajhi A, Lewis RA, Curry S, Wang Z, Bejjani B. Molecular basis of Peters anomaly in Saudi Arabia. *Ophthalmic Genet.* 2004 Dec;25(4):257-70.
Citation on PubMed: <https://www.ncbi.nlm.nih.gov/pubmed/15621878>
- Melki R, Colomb E, Lefort N, Brézin AP, Garchon HJ. CYP1B1 mutations in French patients with early-onset primary open-angle glaucoma. *J Med Genet.* 2004 Sep;41(9):647-51.
Citation on PubMed: <https://www.ncbi.nlm.nih.gov/pubmed/15342693>
Free article on PubMed Central: <https://www.ncbi.nlm.nih.gov/pmc/articles/PMC1735887/>
- Ray K, Mukhopadhyay A, Acharya M. Recent advances in molecular genetics of glaucoma. *Mol Cell Biochem.* 2003 Nov;253(1-2):223-31. Review.
Citation on PubMed: <https://www.ncbi.nlm.nih.gov/pubmed/14619973>
- Vasiliou V, Gonzalez FJ. Role of CYP1B1 in glaucoma. *Annu Rev Pharmacol Toxicol.* 2008;48:333-58. Review.
Citation on PubMed: <https://www.ncbi.nlm.nih.gov/pubmed/17914928>
- Vincent A, Billingsley G, Priston M, Glaser T, Oliver E, Walter M, Ritch R, Levin A, Heon E. Further support of the role of CYP1B1 in patients with Peters anomaly. *Mol Vis.* 2006 May 16;12:506-10.
Citation on PubMed: <https://www.ncbi.nlm.nih.gov/pubmed/16735991>
- Vincent A, Billingsley G, Priston M, Williams-Lyn D, Sutherland J, Glaser T, Oliver E, Walter MA, Heathcote G, Levin A, Héon E. Phenotypic heterogeneity of CYP1B1: mutations in a patient with Peters' anomaly. *J Med Genet.* 2001 May;38(5):324-6.
Citation on PubMed: <https://www.ncbi.nlm.nih.gov/pubmed/11403040>
Free article on PubMed Central: <https://www.ncbi.nlm.nih.gov/pmc/articles/PMC1734880/>
- Vincent AL, Billingsley G, Buys Y, Levin AV, Priston M, Trope G, Williams-Lyn D, Héon E. Digenic inheritance of early-onset glaucoma: CYP1B1, a potential modifier gene. *Am J Hum Genet.* 2002 Feb;70(2):448-60. Epub 2002 Jan 3.
Citation on PubMed: <https://www.ncbi.nlm.nih.gov/pubmed/11774072>
Free article on PubMed Central: <https://www.ncbi.nlm.nih.gov/pmc/articles/PMC384919/>
- Weisschuh N, Schiefer U. Progress in the genetics of glaucoma. *Dev Ophthalmol.* 2003;37:83-93. Review.
Citation on PubMed: <https://www.ncbi.nlm.nih.gov/pubmed/12876831>

Reprinted from Genetics Home Reference:
<https://ghr.nlm.nih.gov/gene/CYP1B1>

Reviewed: January 2014
Published: September 10, 2019

Lister Hill National Center for Biomedical Communications
U.S. National Library of Medicine
National Institutes of Health
Department of Health & Human Services